



AMF

Harley-Davidson

OWNER'S MANUAL SUPPLEMENT

1980 FXWG-80

Part No. 99460-80S

CONSUMER INFORMATION

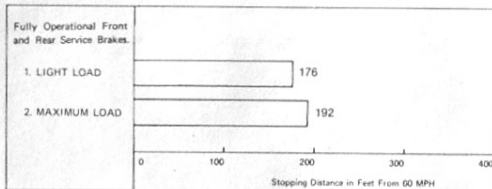
STOPPING DISTANCE

Required by Federal Motor Vehicle Safety Regulation 575.101.

This figure indicates braking performance that can be met or exceeded by the vehicle to which it applies, without locking the wheels, under different conditions of loading.

Notice: The information presented represents results obtainable by skilled drivers under controlled road and vehicle conditions, and the information may not be correct under other conditions.

Description of vehicle: Harley-Davidson 1980 FXWG-80



1. Light Load Vehicle Weight includes 200 lb. driver-no accessories.
 2. Maximum Loaded Vehicle Weight includes 300 lb. driver & passenger load plus full accessory equipment.

ACCELERATION AND PASSING ABILITY

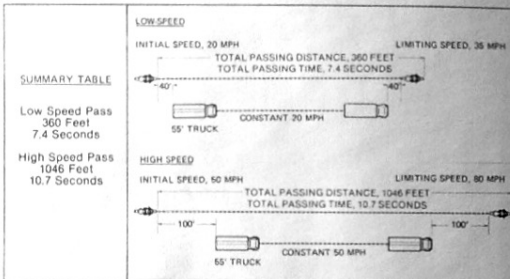
Required by Federal Motor Vehicle Safety Regulation 575.106.

This figure indicates passing times and distances that can be met or exceeded by the vehicle to which it applies, in the situations diagrammed below.

The low speed pass assumes an initial speed of 20 MPH and a limiting speed of 35 MPH. The high speed assumes an initial speed of 50 MPH and a limiting speed of 80 MPH, or maximum attainable lower speed.

Notice: The information presented represents results obtainable by skilled drivers under controlled road and vehicle conditions, and the information may not be correct under other conditions.

Description of vehicle: Harley-Davidson 1980 FXWG-80



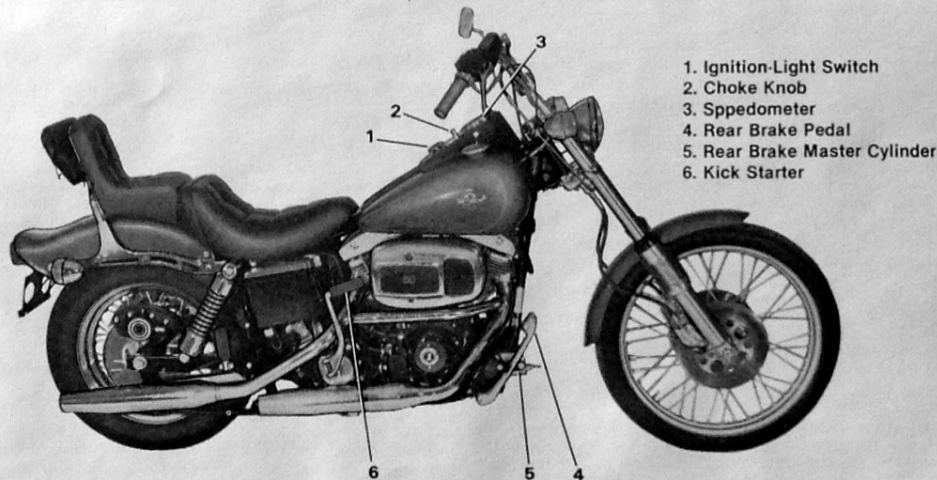
Tested at maximum loaded vehicle weight includes 300 lb. driver & passenger load plus full accessory equipment.

AMF HARLEY-DAVIDSON MOTOR CO., INC.

INTRODUCTION

The information given in the 1980 FL/FX Owner's Manual, Part No. 99460-80, applies to the 1980 FXWG-80 with the exceptions listed in this supplement.

1363



1. Ignition-Light Switch
2. Choke Knob
3. Spedometer
4. Rear Brake Pedal
5. Rear Brake Master Cylinder
6. Kick Starter

Figure 1. Right Side View — FXWG-80

SPECIFICATIONS

DIMENSIONS (Inches)

| | |
|----------------------|------|
| Wheel Base | 65.0 |
| Overall Length | 93.0 |
| Overall Width | 27.5 |
| Road Clearance | 6.0 |
| Saddle Height | 28.0 |

WEIGHT (Pounds)

| | |
|--|------|
| Dry Weight (as shipped from the factory) | 585 |
| GVWR | 1085 |
| GAWR - Front | 390 |
| GAWR - Rear | 695 |

CAPACITIES

| | |
|-------------------------|--------------------|
| Fuel Tank - Total | 5 Gallons (U.S.) |
| Reserve | 1.2 Gallons (U.S.) |
| Oil Tank | 4 Quarts |

OPERATION

Operation of the FXWG-80 is the same as other FX models. Under Federal Regulations, speedometer readings are accurate to within 4 mph higher or 4 mph lower than actual vehicle speed. We suggest that you check your speedometer over a measured mile to verify its accuracy.

IGNITION SYSTEM

| | |
|-------------------|--------------------------|
| Spark Plugs | Harley-Davidson No. 5R6A |
| Size | 14 mm |
| Gap | 0.038 to 0.043 in. |

TIRE DATA

Tire inflation pressures are the same as the FXE model.

TIRE SIZES

| | |
|-----------------------------------|---------------------|
| Front Wheel — 21 Inch | |
| Harley-Davidson Tire Series | ZZZ |
| Tire Size | MH90-21 |
| Tire Mfg. & Type | Goodyear, Sport Rib |
| Inner Tube | Goodyear, 3.00-21 |

Rear Wheel — 16 Inch

| | |
|-----------------------------------|----------------------|
| Harley-Davidson Tire Series | TTT |
| Tire Size | MT90-16 |
| Tire Mfg. & Type | Goodyear, Speed Grip |
| Inner Tube | Goodyear, G5.10-16 |

LUBRICATION AND MAINTENANCE

The information in the 1980 FL/FX Owner's Manual applies to the FXWG-80 with the following additions.

FRONT FORK

When forks are disassembled for repairs and reassembled (DRY), each fork side requires 10 ounces of Harley-Davidson Type B Fork Oil. When oil is drained for refill, each fork side should have 9¼ ounces of oil added.

REAR BRAKE (See Figure 2)

Free play of the master cylinder plunger (1) should be approximately 1/16 inch. The adjustment should be checked every 1250 miles.

To adjust the free play, loosen jamnut (2) and turn stop bolt (3) in (clockwise) to decrease free play or out (counterclockwise) to increase free play. While holding the stop bolt in position, tighten the jamnut to 10 ft-lbs torque.

The rear brake master cylinder is under a protective cover that must be removed for servicing. Loosen the master cylinder mounting bolts and pull straight up on the cover. After servicing reinstall the cover and tighten the mounting bolts to 20 ft-lbs torque. Check the master cylinder plunger free play.

FRONT WHEEL AND TIRE

The useful life of the front tire can be extended by reversing the tire and wheel assembly in the front forks at 5000 mile intervals. When reinstalling the wheel on the motorcycle, insert the axle from the right side and install the loose spacer on the left side. Make sure that the axle nut is tightened to 50 ft-lbs torque and the fork slider cap nuts to 11 ft-lbs torque.

After reinstalling the wheel, spin it and actuate the front brake several times. If the brake pads are dragging, the calipers must be disassembled according to Service Manual procedures and the pistons retracted and adjusted by actuating the hand lever.

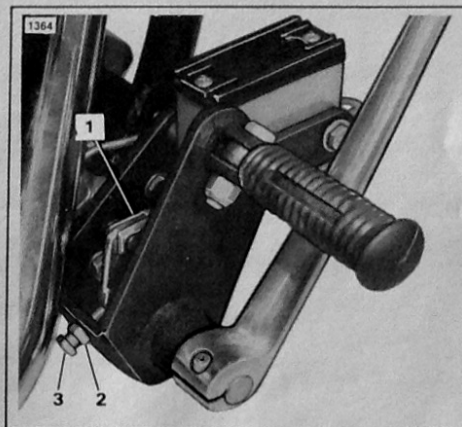
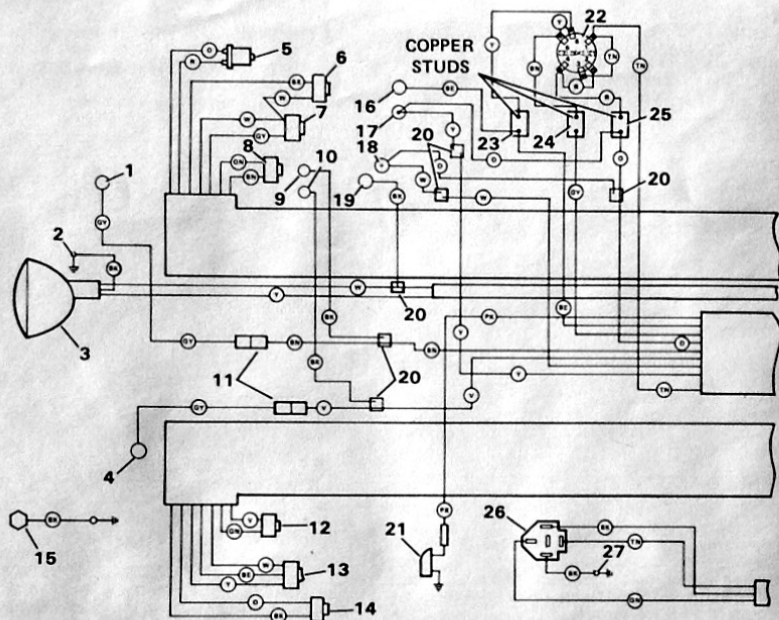
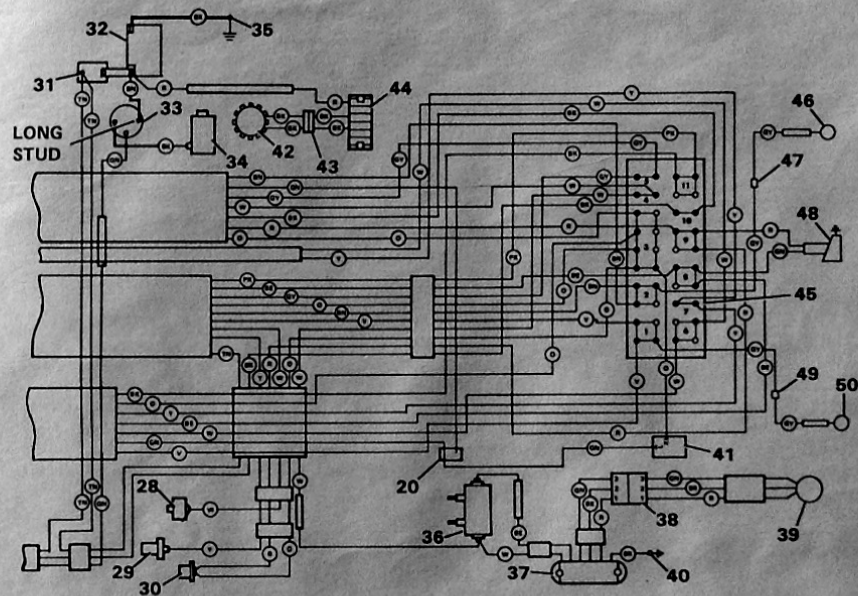


Figure 2.



FXWG-80 WIRING DIAGRAM — PART I



FXWG-80 WIRING DIAGRAM — PART II

FXWG — WIRING DIAGRAM KEY

KEY TO COLOR CODE

| | |
|----|--------|
| BE | BLUE |
| BK | BLACK |
| BN | BROWN |
| GN | GREEN |
| GY | GRAY |
| O | ORANGE |
| PK | PINK |
| R | RED |
| V | VIOLET |
| W | WHITE |
| Y | YELLOW |
| TN | TAN |

1. Right front turn signal lamp
2. Right wire harness clamp
3. Headlamp
4. Left front turn signal lamp
5. Stop lamp switch — front
6. Starter button
7. Engine stop switch
8. Right turn signal switch
9. Right turn signal pilot lamp
10. Left turn signal pilot lamp
11. Pin and socket connector (2)
12. Left turn signal switch
13. Headlamp beam switch
14. Horn switch
15. Handlebar riser bolt
16. Speedometer lamp
17. Oil pressure signal lamp
18. Neutral indicator lamp
19. High beam indicator lamp
20. Connector (7)
21. Horn
22. Ignition — light switch
23. Lighting circuit breaker (15A)
24. Ignition circuit breaker (15A)
25. Accessories circuit breaker (15A)
26. Starter relay
27. Starter motor bracket
28. Neutral switch
29. Oil pressure switch
30. Rear stoplamp switch
31. Main circuit breaker (30A)
32. Battery
33. Starter solenoid
34. Starter motor
35. Frame bolt
36. Ignition coil
37. Ignition module
38. Connector
39. Ignition sensor
40. Ground to frame
41. Directional flasher
42. Alternator Stator
43. Connector
44. Regulator - rectifier module
45. Terminal board
46. Right rear turn signal lamp
47. Brown tag
48. Tail and stop lamp
49. Violet tag
50. Left rear turn signal lamp